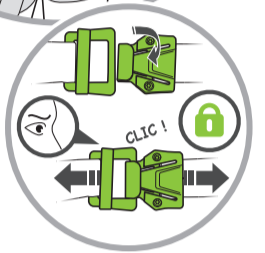
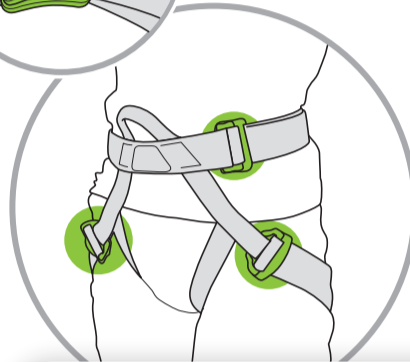
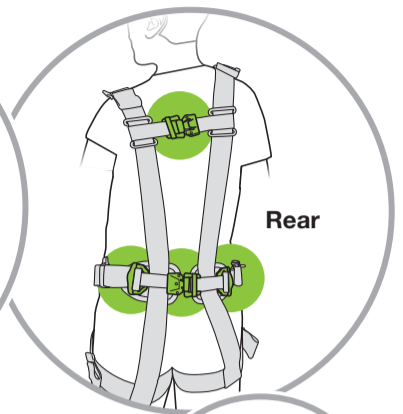
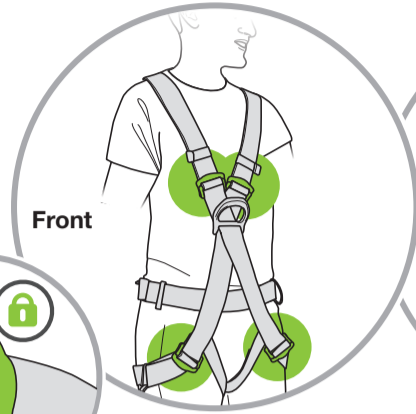
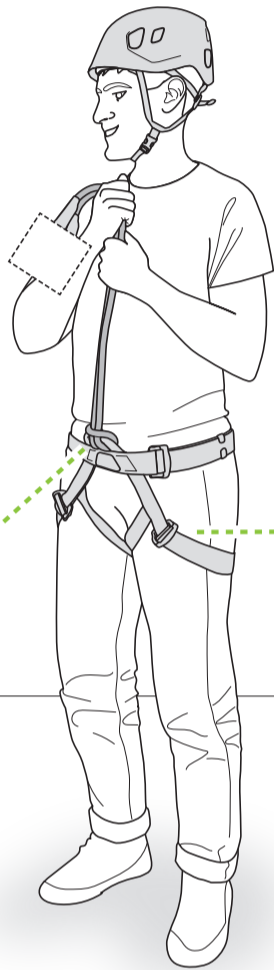
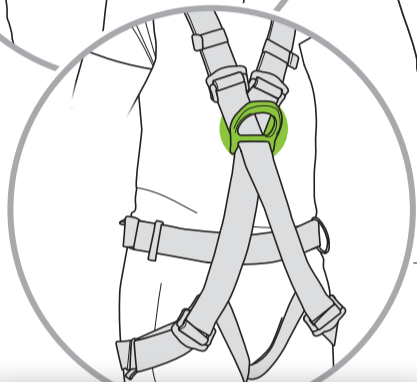


Helmet

- Helmet correctly adjusted
- Chinstrap buckle fastened



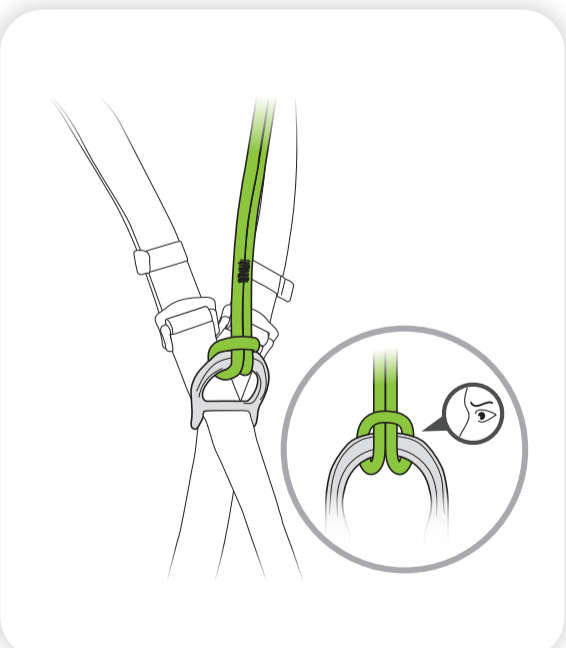
Harness

- Harness waistbelt positioned directly above the hips
- Harness adjusted to fit snugly
- Proper tightening and fastening of the adjustment buckles

Attaching a lanyard

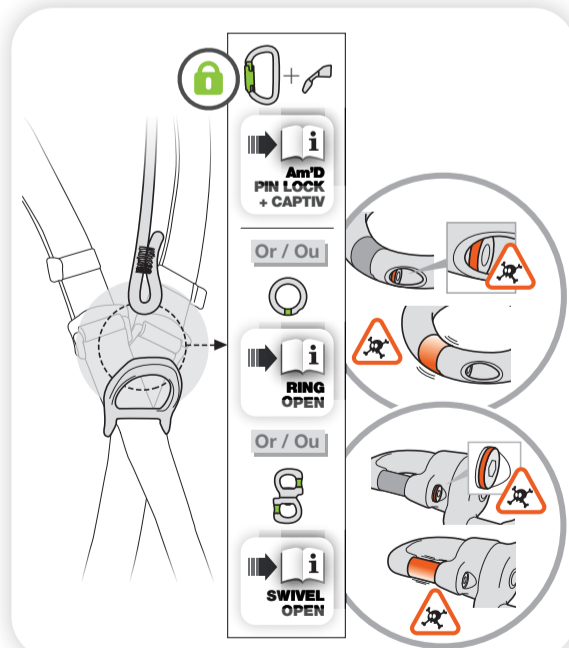
Connection with girth hitch

- Girth hitch tightened and well fastened

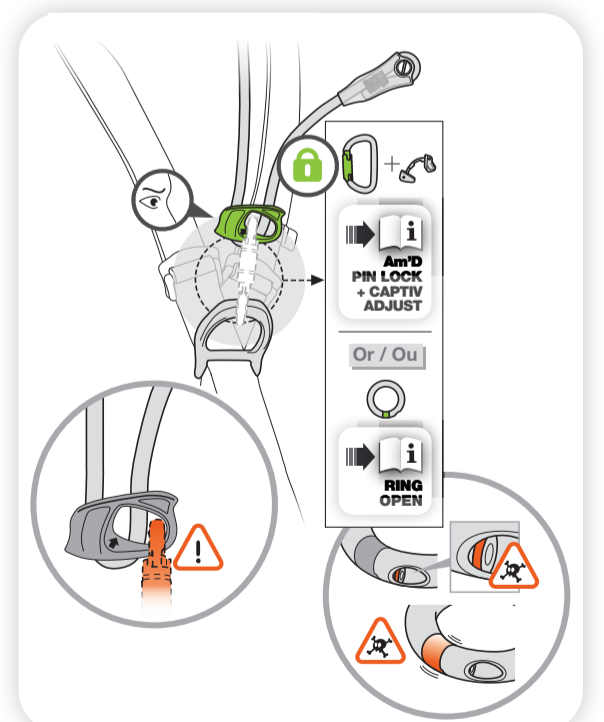


Connection with connector

- Am'D PIN-LOCK: carabiner is locked and CAPTIV is in place
- RING OPEN and SWIVEL: no play in the spacer



Connection with connector and ADJUST rope adjuster to the harness



Remember that before using your equipment, you must have read and understood the supplied Instructions for Use.

Available at [PETZL.COM](https://www.petzl.com)

Access the inaccessible®